





# 24 families

Where comfort meets convenience and where bound to feel like home

4 BHK  
LIVING SUPREMACY BUNGALOWS



# FOR WHAT YOU LEAVE BEHIND

Supreme Residences for a Modern Lifestyle only at KALP HI-LIFE



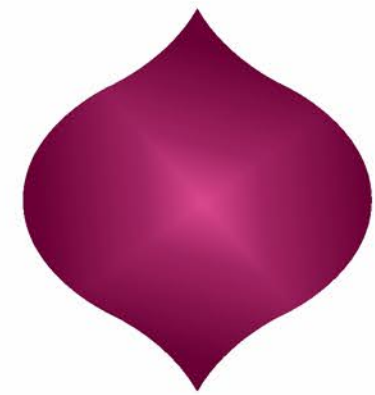
POSH SPACES THAT MAKE  
YOU WISH TO STAY

Best memories start here because its Designed for natural living



ABODES WITH  
EXCLUSIVE STYLING

A place where you find the sense of extent comfort and limitless joy



# PLACE WHERE LEISURE IS A DIRECTION OF LIFE

Find well associated location and harmonious ambience at KALP HI-LIFE



## LAYOUT PLAN

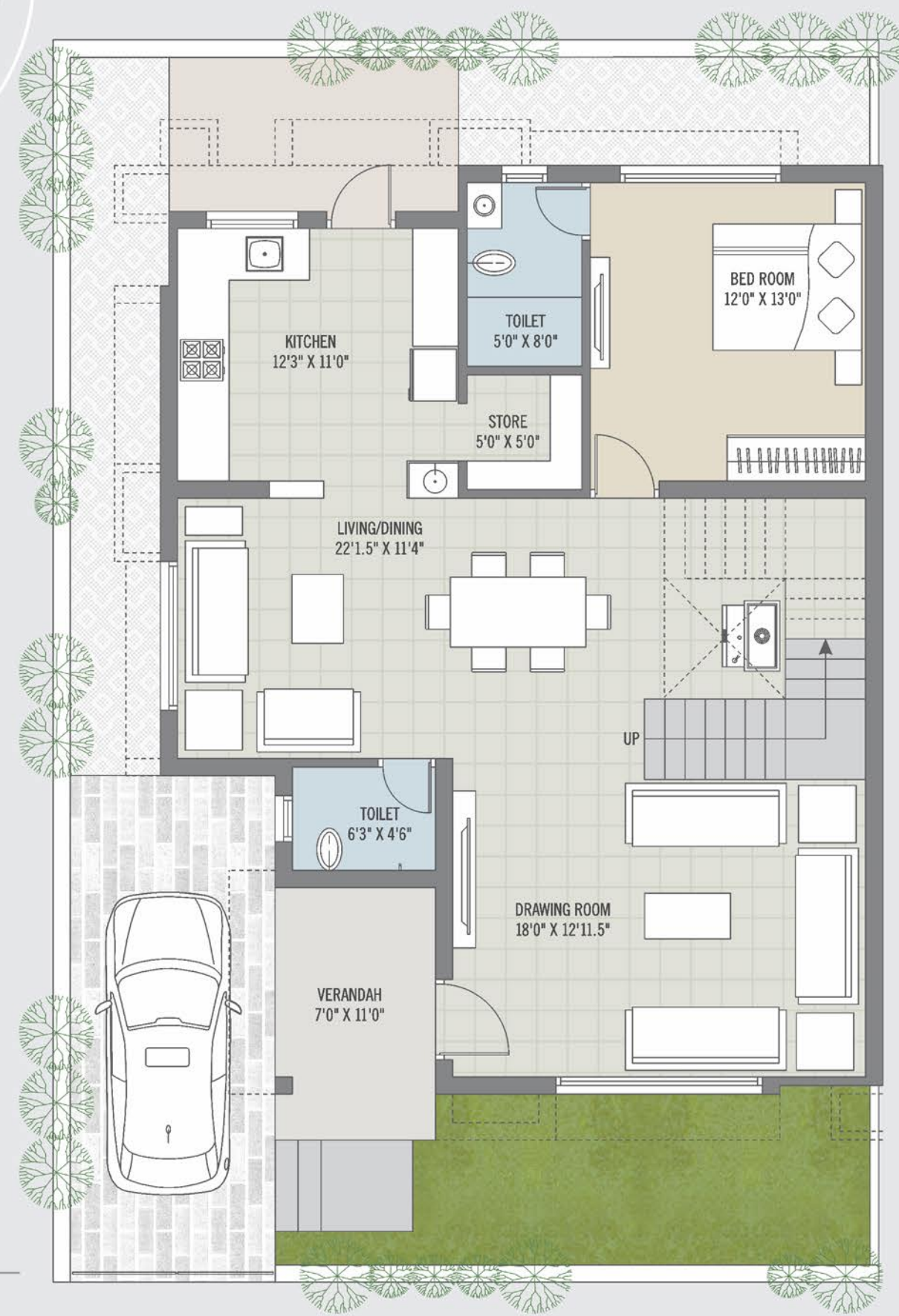


PLOT NO.	SQ. YARD	TYPES
01	246	A
02	209	A
03	210	A
04	217	A
05	226	A
06	310	A
07	397	A
08	198	B
09	191	B
10	190	B
11	219	B
12	226	B
14	205	B
15	205	B
16	231	B
17	191	B
18	204	B
19	185	C
20	172	C
21	176	C
22	217	C
23	249	A
24	203	A
25	233	A

- A - TYPE
- B - TYPE
- C - TYPE



4 BHK  
UNIT PLAN



TYPE - A

GROUND FLOOR PLAN



FIRST FLOOR PLAN





4 BHK  
UNIT PLAN



TYPE - B

GROUND FLOOR PLAN



FIRST FLOOR PLAN



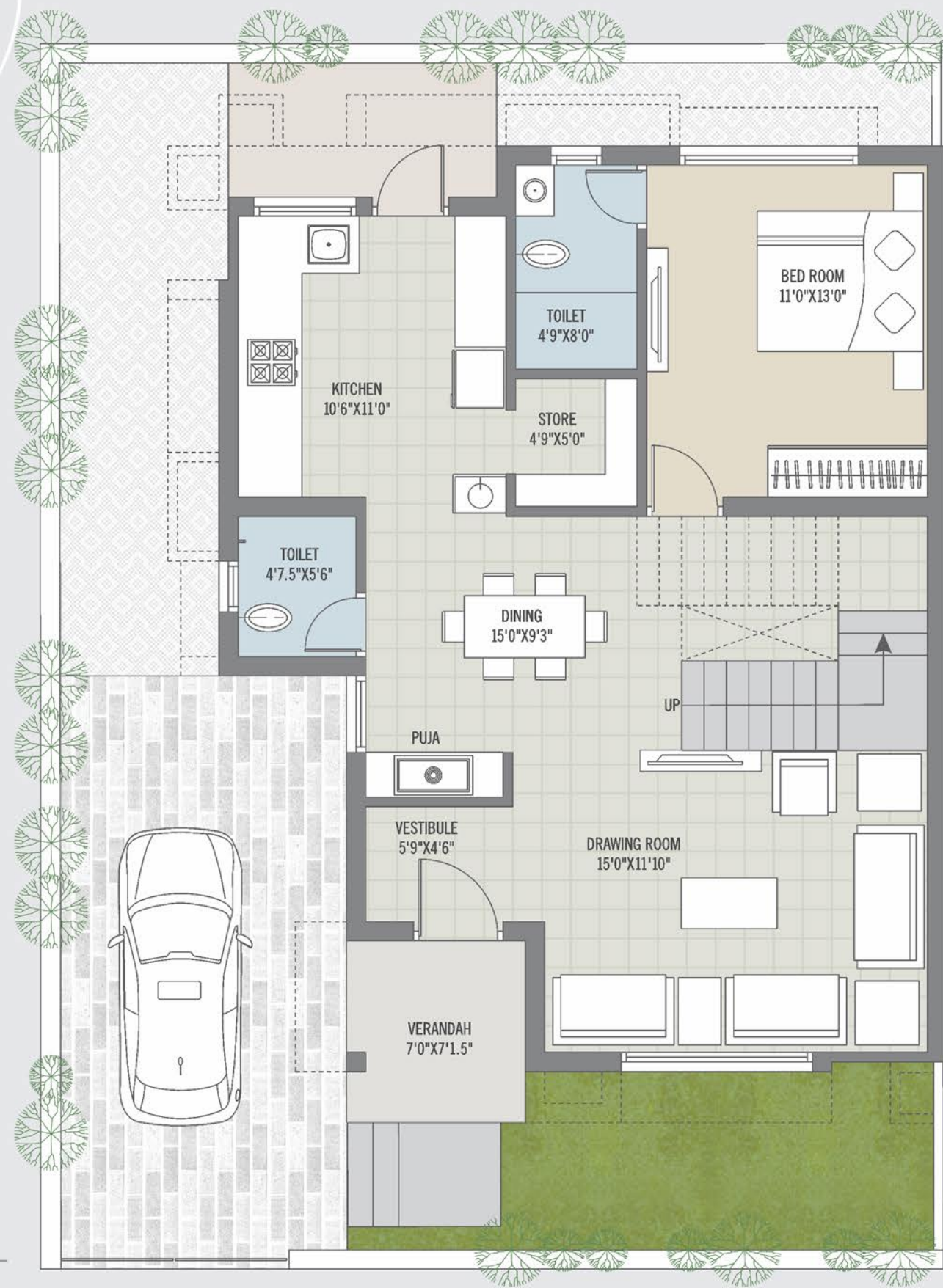
CONSTRUCTED TO COMFORT YOUR LIFE

There is nothing like staying at KALP HI-LIFE. For real comfort

RESHAPED LUXURIOUS LIVING  
KALPHI-LIFE is a perfect blend of luxury living & lifestyle

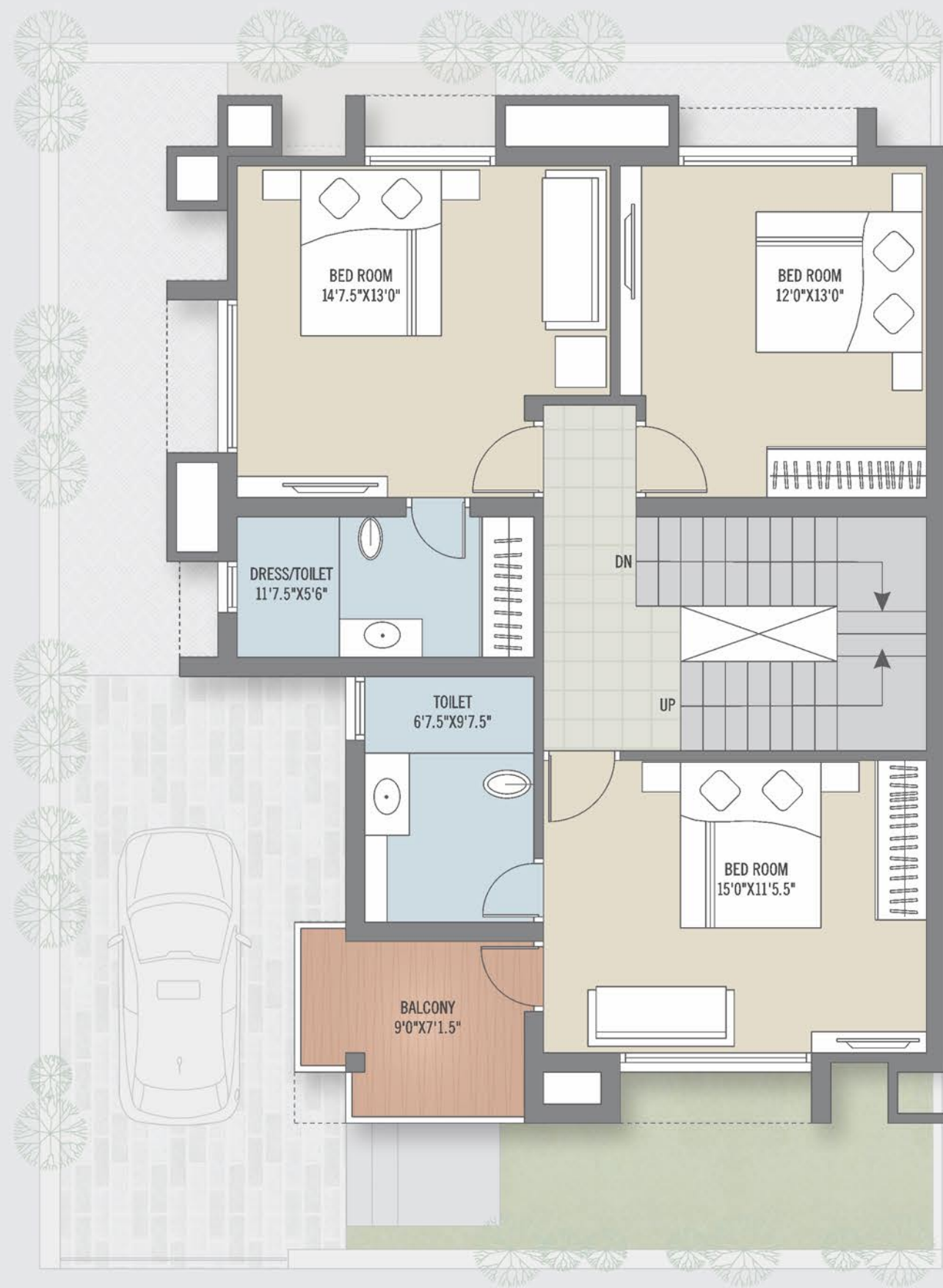


4 BHK  
UNIT PLAN



TYPE - C

GROUND FLOOR PLAN

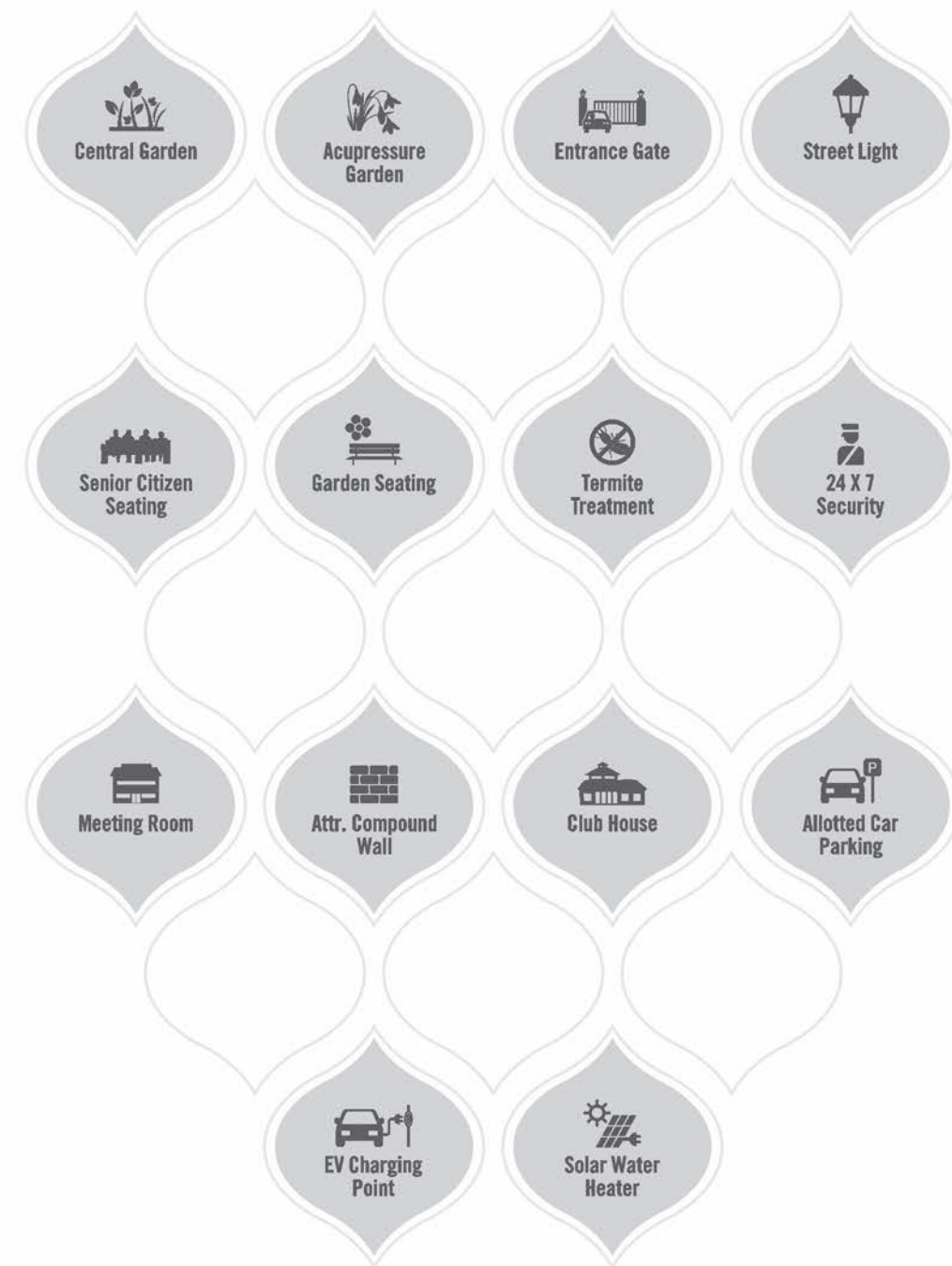


FIRST FLOOR PLAN



GOOD DESIGN FOR GOOD HOME  
At KALP HI-LIFE you wish to celebrate there is a fabulous house just for you!

## AMENITIES



## SPECIFICATION :



### STRUCTURE :

- **RCC** : Earthquake Resistant Frame Structure • **Masonry** : Bricks
- **Plaster** : Double Coat Mala plaster in all internal wall with putty ( Birla White or Equivalent )
- External wall - Double coat Plaster Textured Finish with Premium Quality acrylic paints.



### FLOORING :

- **LIVING / KITCHEN** : Vitrified Tiles - Best Quality
- **BED ROOMS** : Vitrified Tiles of Best Quality



### DOORS :

- **MAIN DOOR** : Veneer Finished Flush Door With Digital Lock
- **INTERNAL DOOR** : Enamel paint flush door with Valsadi teak wood frame.



### WASH AREA :

- **Floor** : Anti - skid Ceramic Tiles flooring • **Dado** : Premium Ceramic Tiles



### BALCONY :

- **Floor** : Ceramic / Rustic Tiles of Premium Quality



### TOILET :

- High Quality Glaze tiles dado up to Beam Bottom level • Anti - skid Ceramic Tiles flooring of Best Quality • Granite / Counter Basin • Sanitary Ware of Premium Brand like Kohler Jaquar Or Equivalent • EWC - Wall Hung type Kohler, Jaquar or Equivalent • C P Brass Fitting of Premium Brand like Kohler, Jaquar or Equivalent • Plumbing Piping - HDPE Pipes For Internal & External Plumbing • Pressurized Water Supply, Provision for Exhaust fan / Ventilations, Hot Water Piping, Geyser, Shower • Chemical Water proofing in all Bathroom Sunk Slab



### KITCHEN & STORE :

- **Floor** : Vitrified Tiles of Premium Quality • **Platform** : Natural Granite
- **Dado** : Premium Ceramic Tiles • **Store Self** : D P Kota / Granite Shelf
- PNG Gas Line Connection



### ELECTRIFICATION :

- Concealed ISI Copper Wiring With Modular Switches • MCB Distribution panel
- 3 Phase Electric Connection • Centralized DTH For TV and JIO Fiber Connection



### SECURITY :

- Video Door Phone Security System • CCTV Surveillance
- Intercom connectivity with every unit and society gate



### WATER :

- Water Softener plant & solar water heater for each bungalow.

## BRAND WE USE OR EQUIVALENT

### STEEL



### CEMENT



### FLOORING



### BATHROOM



### ELECTRIC



### SWITCHES



### PLUMBING



### GLASS



### DISCLAIMER

Stamp duty, registration charges, legal charges, GST, UGVCL charges including cable and sub-station cost and other government charges shall be borne by the purchaser. • Any additional charges or duties levied by the government / local authorities during or after the completion of the project will be borne by the purchaser. • Extra work shall be executed after receiving full payment. No Changes will be allowed external elevations. • The developers reserve the right to make any changes in the plans, information and Specification as may be required without any prior notice. • Such changes will be binding to all the members. • Maintenance deposit shall be paid separately by all members in advance. • This brochure is just for an easy presentation of the project and should not be treated as a legal document.



**DEVELOPER**  
**SHREE HARI**  
• BUILD SPACE •

**ARCHITECTS**  
**PARESH PATEL**  
**ANAL PATEL**  
AHMEDABAD

**SITE ADDRESS :**  
KALP HI-LIFE, Visnagar - Mehsana Road,  
Nr. Bharat Petroleum, Visnagar.  
**CONTACT : +91 95373 69600**



